

THE SOTERIAN

FITTING INSTRUCTIONS

Part Number: The Soterian

Fitting Instructions for TS008: 2015 letterplate.

Door thickness: 44mm–70mm. For composite and timber doors.

UAP: The Soterian

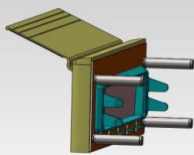
KM670828

TS008:2015 CLASSIFICATION

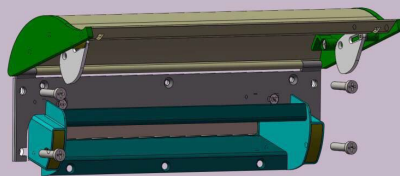


A	1	2	N	3	N	0	0
---	---	---	---	---	---	---	---

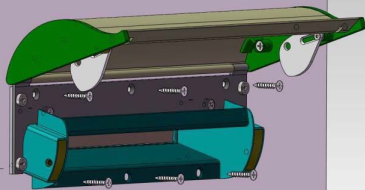
1



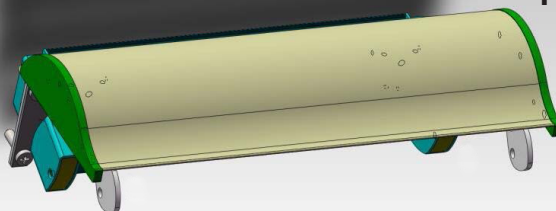
2



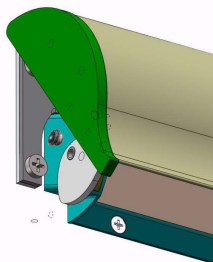
3



4



5



NOTE: For 54mm and 70mm door thicknesses alternative screws sets must be requested:
 TS008-STANDARD-FIXING-44MM-KIT TS008-STANDARD-FIXING-70MM-KIT-UPVC

*The letterplates should be cleaned monthly with a moist cloth and not with any form of cleaning agents.

How to use hollow wall fixing for UPVC

1. Mark your point with a pencil.
2. Make pilot holes in the 6 fixing points.
3. DO NOT make the hole wider than the anchor.
4. Place the anchor over the hole and firmly tap it in until it's flush with the surface