

UAP LIMITED

INNOVATIVE DOOR HARDWARE SOLUTIONS

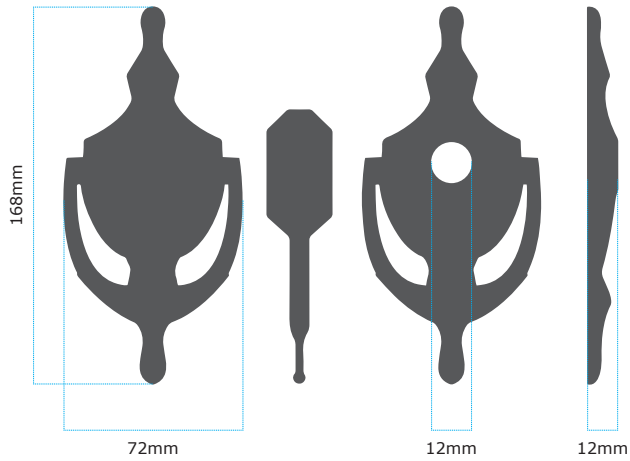
fullex[®]



STAINLESS STEEL RANGE

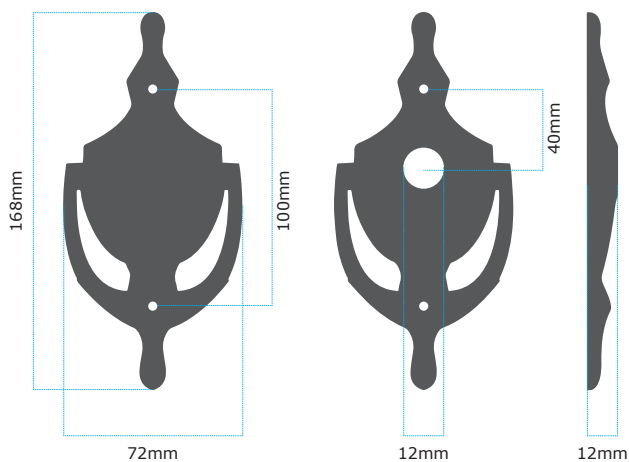
6" VICTORIAN URNS DOOR KNOCKER

HIDDEN FIX SELF ADHESIVE



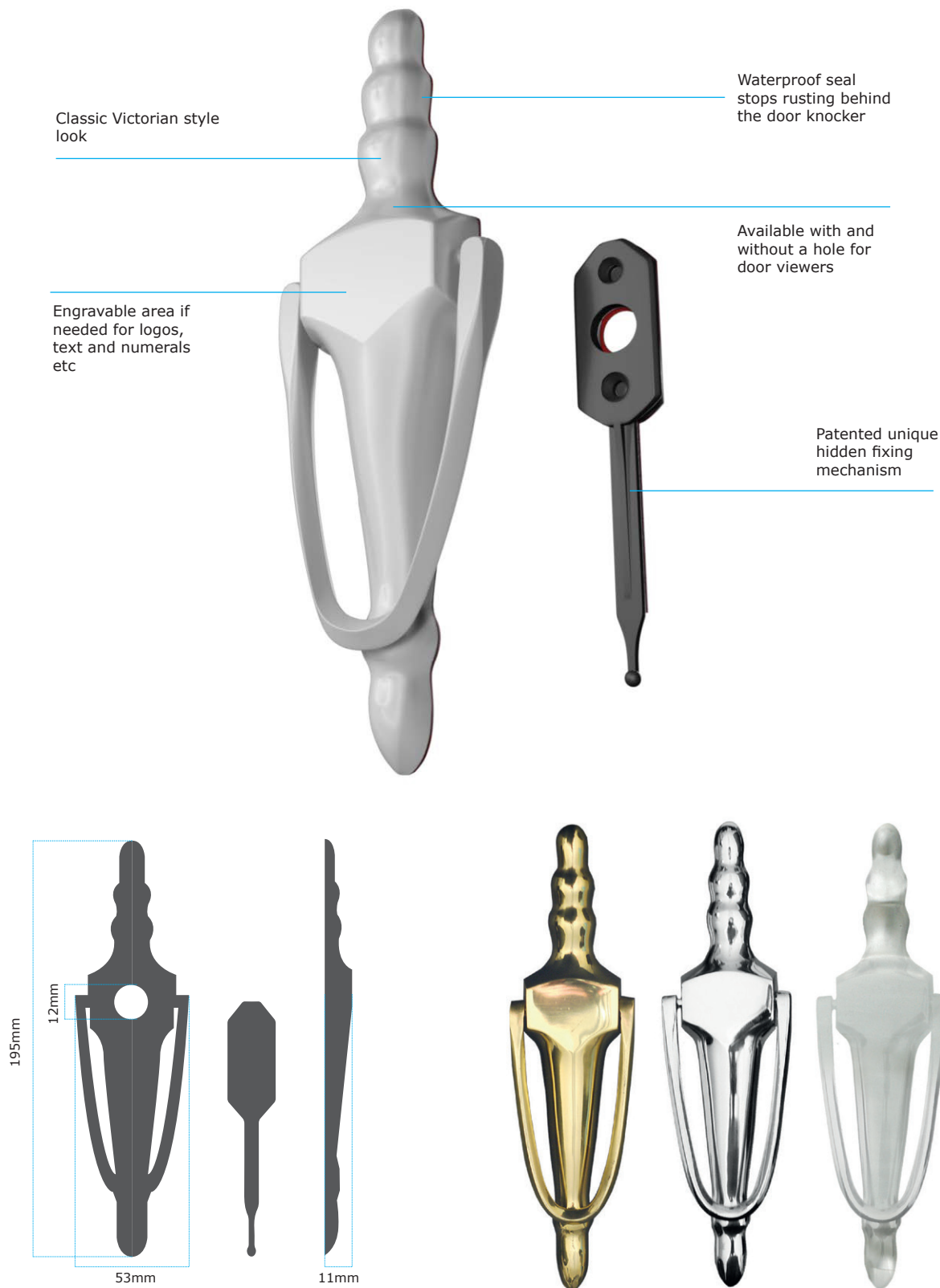
Finish	Material Construction	Coating Guarantee	Solid	With Door Viewer Hole
PVD Gold	Stainless Steel	LIFETIME	V6PVDGHF-NANOCOAST	V6PVDGHF-NANOCOAST
Mirror Polished	Stainless Steel	LIFETIME	V6MPSSH-F-NANOCOAST	V6MPSSH-F-NANOCOAST
Satin Stainless	Stainless Steel	LIFETIME	V6SSSHF-NANOCOAST	V6SSSHF-NANOCOAST

BOLT THROUGH



Finish	Material Construction	Coating Guarantee	Solid	With Door Viewer Hole
PVD Gold	Stainless Steel	LIFETIME	V6PVDG-NANOCOAST	V6PVDG-NANOCOAST
Mirror Polished	Stainless Steel	LIFETIME	V6MPSS-NANOCOAST	V6MPSS-NANOCOAST
Satin Stainless	Stainless Steel	LIFETIME	V6SSS-NANOCOAST	V6SSS-NANOCOAST

8" SLIM VICTORIAN URNS DOOR KNOCKER

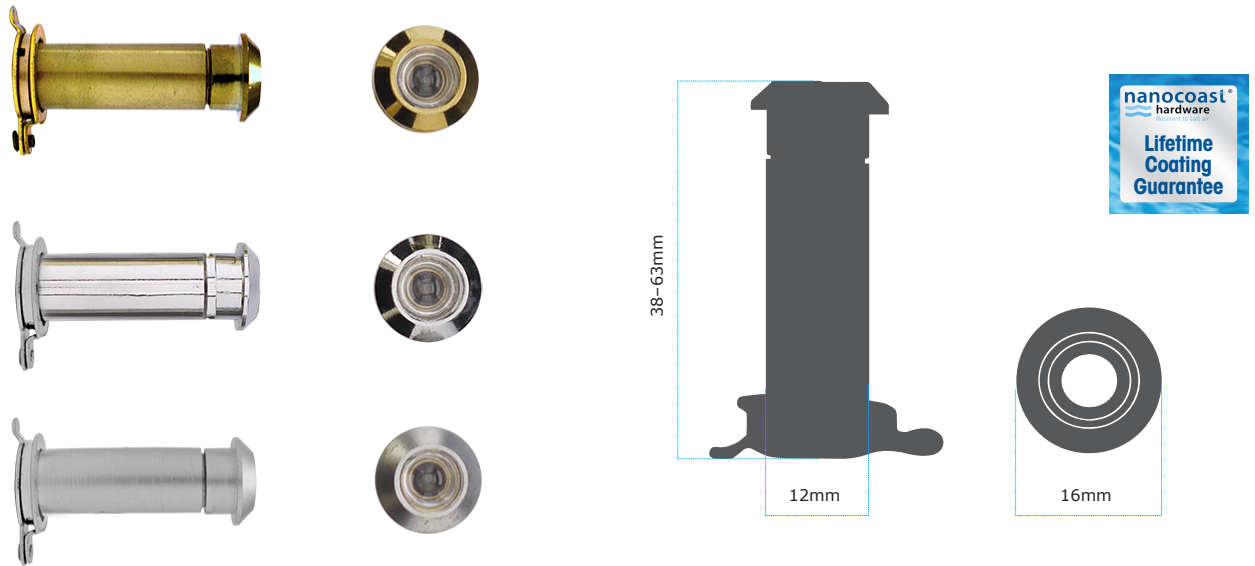


HIDDEN FIX SELF ADHESIVE

Finish	Material Construction	Coating Guarantee	Solid	With Door Viewer Hole
PVD Gold	Stainless Steel	LIFETIME	VSLPVDGHF-NANOCOAST	VSLPVDGHHF-NANOCOAST
Mirror Polished	Stainless Steel	LIFETIME	VSLMPSSHf-NANOCOAST	VSLMPSSHf-NANOCOAST
Satin Stainless	Stainless Steel	LIFETIME	VSLSSSHf-NANOCOAST	VSLSSSHf-NANOCOAST

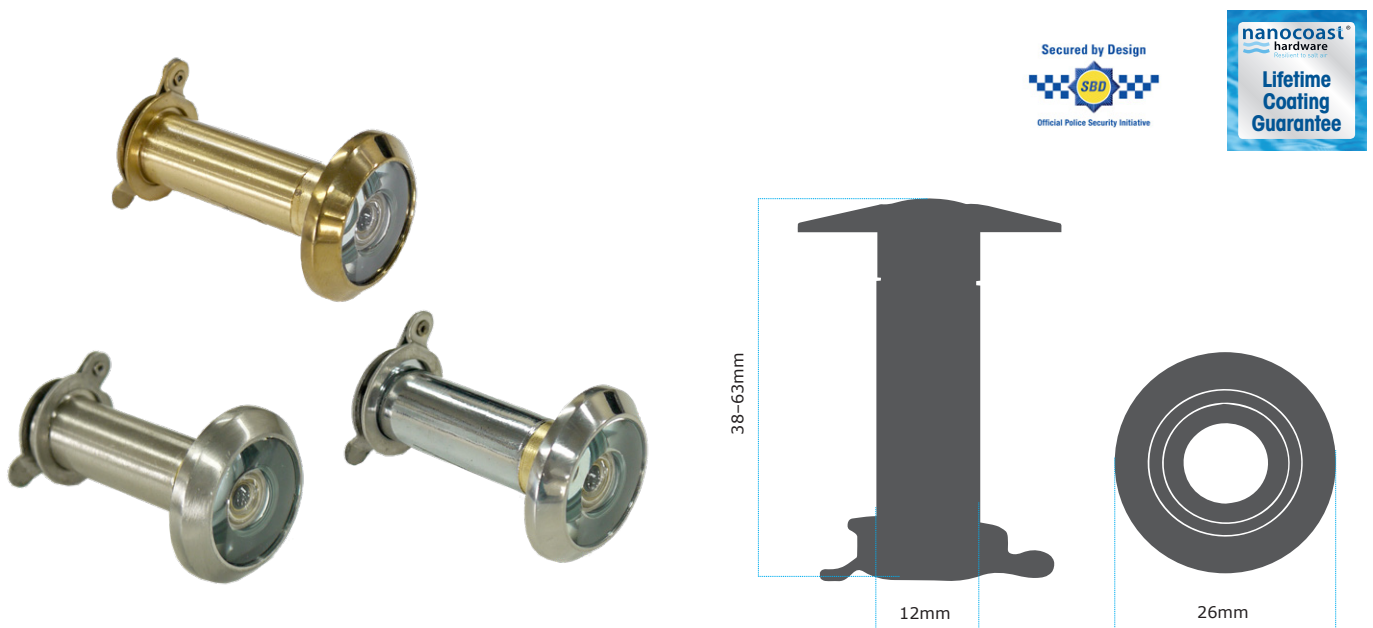
DOOR VIEWERS

12MM WOODEN AND COMPOSITE DOOR VIEWERS (38-63MM)



Finish	Material Construction	Privacy Cover Included	PVD Head	Lens	Coating Guarantee	Product Code
PVD Gold	Stainless Steel	Yes	Yes	Glass	LIFETIME	CILPVDG38-63-NANOCOAST
Mirror Polished	Stainless Steel	Yes	Yes	Glass	LIFETIME	CILMPSS38-63-NANOCOAST
Satin Stainless	Stainless Steel	Yes	Yes	Glass	LIFETIME	CILSSS38-63-NANOCOAST

12MM WIDE ANGLE MARINE GRADE DOOR VIEWERS (35-55MM)



Finish	Material Construction	Privacy Cover Included	PVD Head	Lens	Coating Guarantee	Product Code
PVD Gold	Stainless Steel	Yes	Yes	Glass	LIFETIME	CVLPVDG-NANOCOAST
Mirror Polished	Stainless Steel	Yes	Yes	Glass	LIFETIME	CVPLMPSS-NANOCOAST
Satin Stainless	Stainless Steel	Yes	Yes	Glass	LIFETIME	CVPLSSS-NANOCOAST

PATIO DOOR HANDLE

Salt spray tested to ASTM B117 for 2,000 hours

Smooth operating thumbturn to easily release the latch



Easy to remove the handle from the backplate to adjust opening direction

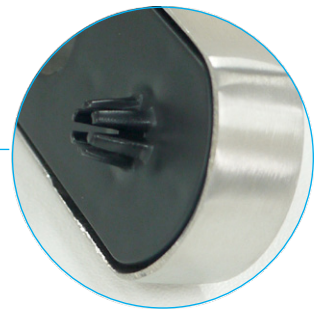
Made with 316 grade stainless steel

Tube handle for a comfortable grip

Clean and contemporary design

Compatible with UAP 1 star ZL cylinders and 3 star Kinetica cylinders

Includes the Patent applied for screw alignment feature for easy fitting



Mirror Polished



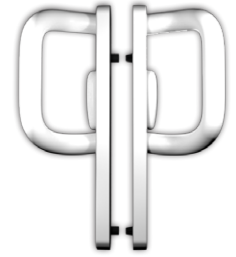
Satin Stainless



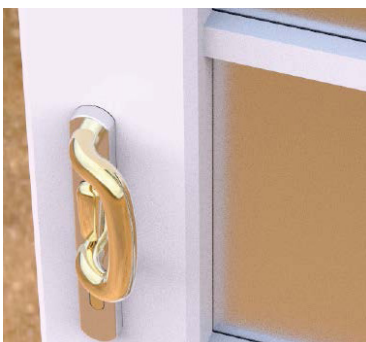
PVD Gold



Black



White

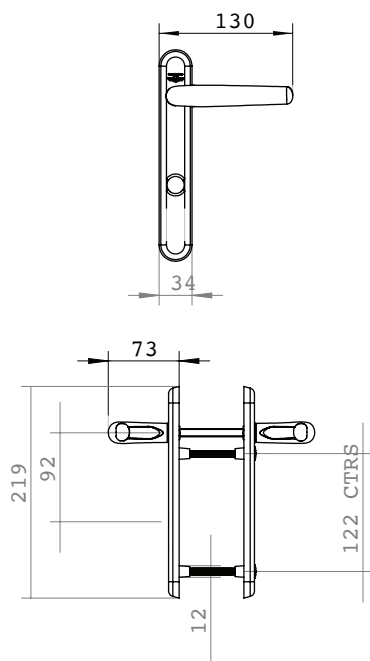


Finish	Material Construction	Coating Guarantee	Retail Pack
Mirror Polished	Stainless Steel	LIFETIME	PATIO-MPSS-NANOCOAST
PVD Gold	Stainless Steel	LIFETIME	PATIO-PVDG-NANOCOAST
Satin Stainless	Stainless Steel	LIFETIME	PATIO-SSS-NANOCOAST
Black	Stainless Steel	LIFETIME	PATIO-BLACK-NANOCOAST
White	Stainless Steel	LIFETIME	PATIO-WHITE-NANOCOAST

HIGH SECURITY DOOR HANDLES

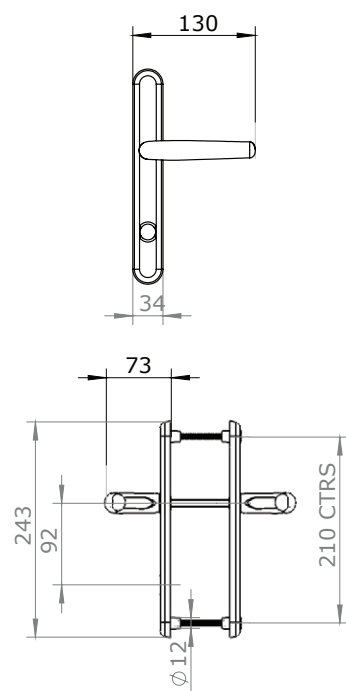
The UAP 2* star high security front door handle has a 219mm or 243mm short backplate, and is aimed at the fabricator who wants to offer a high quality, ergonomically shaped and designed door handle range but who doesn't want to get involved in fitting a cylinder guard. This fit and forget handle is packed with state of the art features, and

can be used by the professional installer offering a security upgrade service. Each high security door handle has been tested to BSi 2* Kitemarked standards, and has also been awarded 'Secured by Design' by the Association of Police Officers.



219mm Long Backplate

Finish	Material Construction	Coating Guarantee	Trade Pack
Mirror Polished	Stainless Steel	LIFETIME	HS219MPSS-NANOCOAST
PVD Gold	Stainless Steel	LIFETIME	HS219PVDG-NANOCOAST
Satin Stainless	Stainless Steel	LIFETIME	HS219SSS-NANOCOAST



243mm Long Backplate

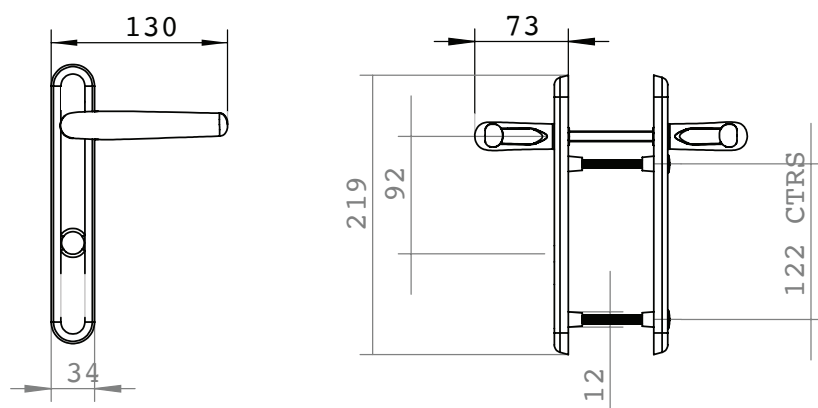
Finish	Material Construction	Coating Guarantee	Trade Pack
Mirror Polished	Stainless Steel	LIFETIME	HS243MPSS-NANOCOAST
PVD Gold	Stainless Steel	LIFETIME	HS243PVDG-NANOCOAST
Satin Stainless	Stainless Steel	LIFETIME	HS243SSS-NANOCOAST



STANDARD DOOR HANDLES

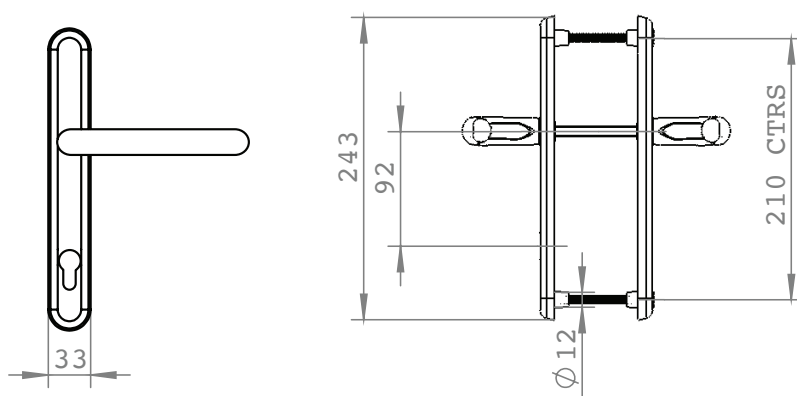
The UAP standard security front door handle is made from 304 grade stainless steel, and is part of the UAP Nanocoast range. The UAP Nanocoast range of products are specifically designed for areas which are within a 25 mile radius of the coast, or within 5 miles of highly

populated industrial areas. Each front door handle has been salt spray tested to ASTM B117 for 2,000 hours, and comes with an industry first LIFETIME coating guarantee, as the products will not pit, rust or corrode no matter what environments you put them in!



219mm Long Backplate

Finish	Material Construction	Coating Guarantee	Trade Pack
Mirror Polished	Stainless Steel	LIFETIME	DH219MPSS-NANOCOAST-OLDSTYLE
PVD Gold	Stainless Steel	LIFETIME	DH219PVDG-NANOCOAST-OLDSTYLE
Satin Stainless	Stainless Steel	LIFETIME	DH219SSS-NANOCOAST-OLDSTYLE



243mm Long Backplate

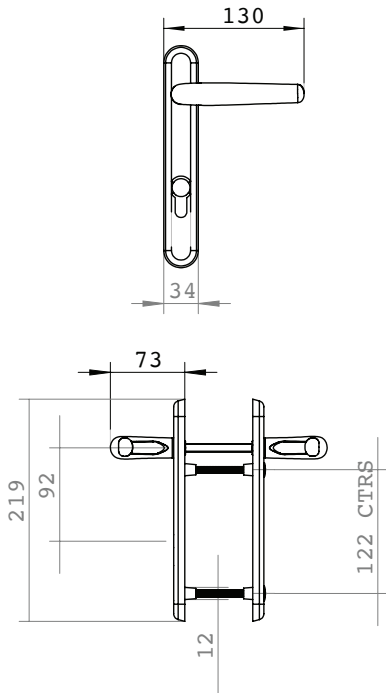
Finish	Material Construction	Coating Guarantee	Trade Pack
Mirror Polished	Stainless Steel	LIFETIME	DH243MPSS-NANOCOAST-OLDSTYLE
PVD Gold	Stainless Steel	LIFETIME	DH243PVDG-NANOCOAST-OLDSTYLE
Satin Stainless	Stainless Steel	LIFETIME	DH243SSS-NANOCOAST-OLDSTYLE

HYBRID DOOR HANDLE

The UAP hybrid front door handle has a 219mm short backplate, and is aimed at the fabricator who wants to offer a high quality designed front door handle.

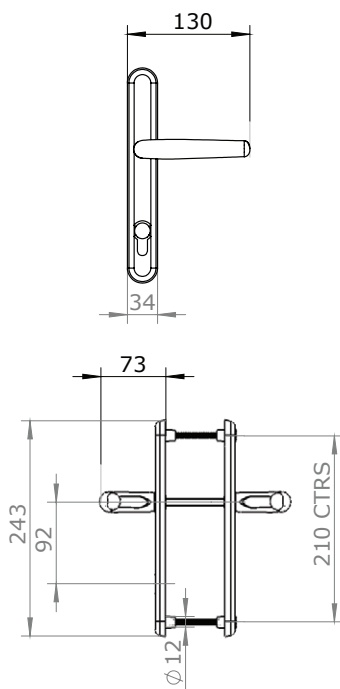
One of the main features that distinguishes this front door handle from any other is the fact that the outer and inner sides are made from different materials. The part of the door handle that is installed outside the front door is manufactured from 316 grade stainless steel, while the inner part is made of Zamak.

- High quality designed handle
- Handle gives a very comfortable grip when operating
- Salt spray tested to ASTM B117 for 2,000 hours



219mm Long Backplate

Finish	Material Construction	Coating Guarantee	Trade Pack
Satin Stainless	Stainless Steel	LIFETIME	DH219SSS-NANOCOAST



219mm Long Backplate

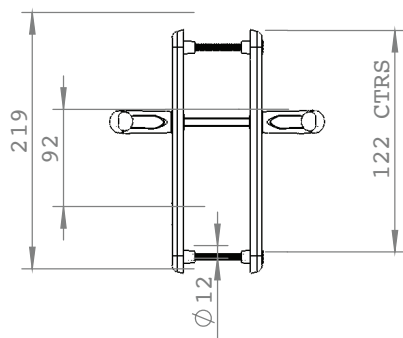
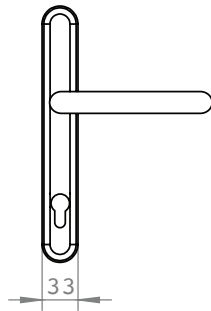
Finish	Material Construction	Coating Guarantee	Trade Pack
Mirror Polished	Stainless Steel	LIFETIME	DH243MPSS-NANOCOAST
PVD Gold	Stainless Steel	LIFETIME	DH243PVDG-NANOCOAST
Satin Stainless	Stainless Steel	LIFETIME	DH243SSS-NANOCOAST



DDA DOOR HANDLE

Features

- High quality designed handle
- Has a 243mm long backplate
- Handle designed to apply with DDA regulations
- Ideal for building and facilities that are accessible to disabled people
- Tube handle gives a very comfortable grip when operating
- Handles are made from 304 grade stainless steel
- Salt spray tested to ASTM B117 for 2,000 hours
- Each handle comes with a LIFETIME coating guarantee!



Mirror
Polished



PVD
Gold



Satin
Stainless



243mm Long Backplate



Finish	Material Construction	Coating Guarantee	Trade Pack
Mirror Polished	Stainless Steel	LIFETIME	DH243MPSS-DDA-NANOCOAST
PVD Gold	Stainless Steel	LIFETIME	DH243PVDG-DDA-NANOCOAST
Satin Stainless	Stainless Steel	LIFETIME	DH243SSS-DDA-NANOCOAST

PULL HANDLES



STRAIGHT PULL HANDLES

Size	Material Construction	Coating Guarantee	Satin Silver	Mirror Polished
400mm	316 Grade Stainless Steel	LIFETIME	PH400S-SSS-NANOCOAST	-
600mm	316 Grade Stainless Steel	LIFETIME	PH600S-SSS-NANOCOAST	-
900mm	316 Grade Stainless Steel	LIFETIME	PH900S-SSS-NANOCOAST	PH900S-MPSS-NANOCOAST
1200mm	316 Grade Stainless Steel	LIFETIME	PH1200S-SSS-NANOCOAST	PH1200S-MPSS-NANOCOAST
1500mm	316 Grade Stainless Steel	LIFETIME	PH1500S-SSS-NANOCOAST	PH1500S-MPSS-NANOCOAST
1800mm	316 Grade Stainless Steel	LIFETIME	PH1800S-SSS-NANOCOAST	PH1800S-MPSS-NANOCOAST



SLIM STRAIGHT PULL HANDLES

Finish	Size	Material Construction	Coating Guarantee	Retail Pack
Satin Stainless	900mm	316 Grade Stainless Steel	LIFETIME	PH900S-SSS-SLIM
Satin Stainless	1200mm	316 Grade Stainless Steel	LIFETIME	PH1200S-SSS-SLIM
Satin Stainless	1500mm	316 Grade Stainless Steel	LIFETIME	PH1500S-SSS-SLIM
Satin Stainless	1800mm	316 Grade Stainless Steel	LIFETIME	PH1800S-SSS-SLIM



ALL FIXINGS ARE INCLUDED WITH OUR BAR PULL HANDLES

OFF SET PULL HANDLES



Finish	Size	Material Construction	Coating Guarantee	Retail Pack
Satin Stainless	400mm	316 Grade Stainless Steel	LIFETIME	PH400OFF-SSS-NANOCOAST
Satin Stainless	600mm	316 Grade Stainless Steel	LIFETIME	PH600OFF-SSS-NANOCOAST
Satin Stainless	900mm	316 Grade Stainless Steel	LIFETIME	PH900OFF-SSS-NANOCOAST
Satin Stainless	1200mm	316 Grade Stainless Steel	LIFETIME	PH1200OFF-SSS-NANOCOAST
Satin Stainless	1500mm	316 Grade Stainless Steel	LIFETIME	PH1500OFF-SSS-NANOCOAST
Satin Stainless	1800mm	316 Grade Stainless Steel	LIFETIME	PH1800OFF-SSS-NANOCOAST

PULL HANDLES

SQUARE STRAIGHT PULL HANDLES



Finish	Size	Material Construction	Coating Guarantee	Retail Pack
Satin Stainless	900mm	316 Grade Stainless Steel	LIFETIME	PH900SQUARE-SSS-NANOCOAST
Satin Stainless	1200mm	316 Grade Stainless Steel	LIFETIME	PH1200SQUARE-SSS-NANOCOAST
Satin Stainless	1500mm	316 Grade Stainless Steel	LIFETIME	PH1500SQUARE-SSS-NANOCOAST

D SHAPED PULL HANDLE



Size	Material Construction	Coating Guarantee	Standard Fix	Hidden Fix
300mm	316 Grade Stainless Steel	LIFETIME	PH300DSHAPE-SSS-NANOCOAST	PH300DSHAPE-SSS-HF-NANOCOAST

KNOB PULL HANDLE



PVD Gold

Mirror Polished

Satin Stainless

Finish	Material Construction	Coating Guarantee	Trade Pack
Mirror Polished	Stainless Steel	LIFETIME	RPH-MPSS-NANOCOAST
PVD Gold	Stainless Steel	LIFETIME	RPH-PVDG-NANOCOAST
Satin Stainless	Stainless Steel	LIFETIME	RPH-SSS-NANOCOAST



HIGH SECURITY ESCUTCHEON

Reach TS 007:2012 3* Standards when you combine with the UAP Zero Lift 1* Cylinder

Bevelled edge makes gripping more difficult to pull it off

Suitable for all composite doors

Contemporary design with a smooth finish

Tested to ISO 9227:2012(en)

Part of the Nanocoast range – made from 304 grade Stainless Steel

Tested to EN 1670:2007 Grade 3 High Corrosion Resistance

High tensile strength fixing bolts



PVD Gold



Mirror Polished



Satin Stainless

High Security Escutcheon

Finish	Material Construction	Coating Guarantee	Trade Pack
Mirror Polished	Stainless Steel	LIFETIME	HSEMPSS-NANOCOAST
PVD Gold	Stainless Steel	LIFETIME	HSEPVDG-NANOCOAST
Satin Stainless	Stainless Steel	LIFETIME	HSESSS-NANOCOAST



STANDARD ESCUTCHEON

Standard Escutcheon

Finish	Material Construction	Coating Guarantee	Trade Pack
Satin Stainless	Stainless Steel	LIFETIME	HSESSS-NANOCOAST



HIGH SECURITY PULL ESCUTCHEON

High Security Pull Escutcheon



Finish	Material Construction	Coating Guarantee	Trade Pack
Mirror Polished	Stainless Steel	LIFETIME	HSEMPSS-PULL-NANOCOAST
Satin Stainless	Stainless Steel	LIFETIME	HSESSS-PULL-NANOCOAST



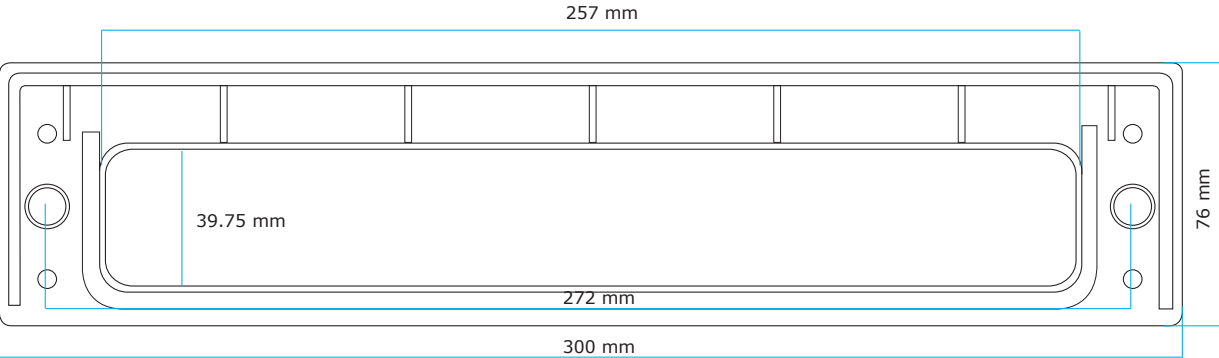
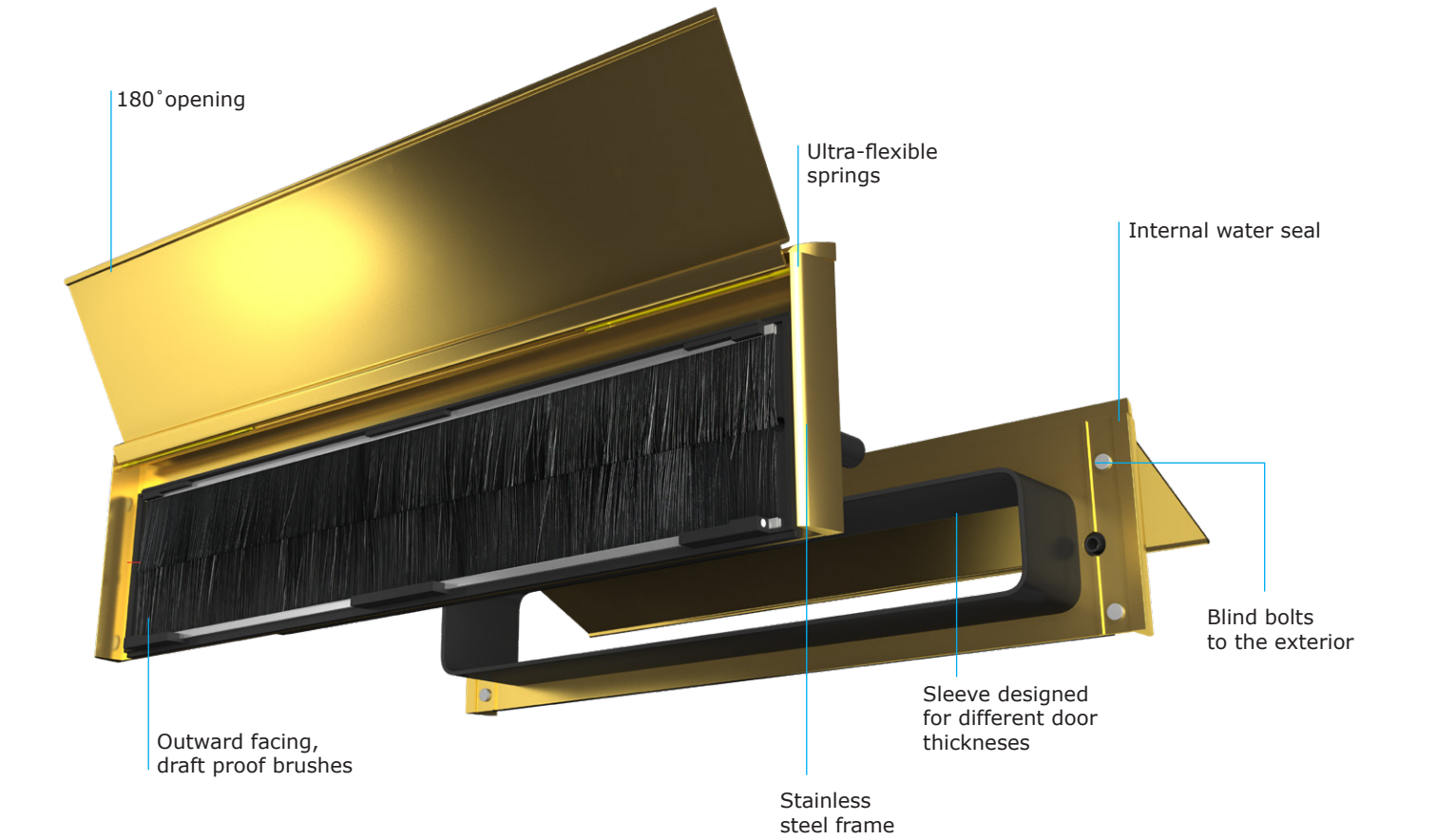
Internal High Security Pull Escutcheon



Finish	Material Construction	Coating Guarantee	Trade Pack
Mirror Polished	Stainless Steel	LIFETIME	HSESSS-PULL-INTERNAL
Satin Stainless	Stainless Steel	LIFETIME	HSEMPSS-PULL-INTERNAL

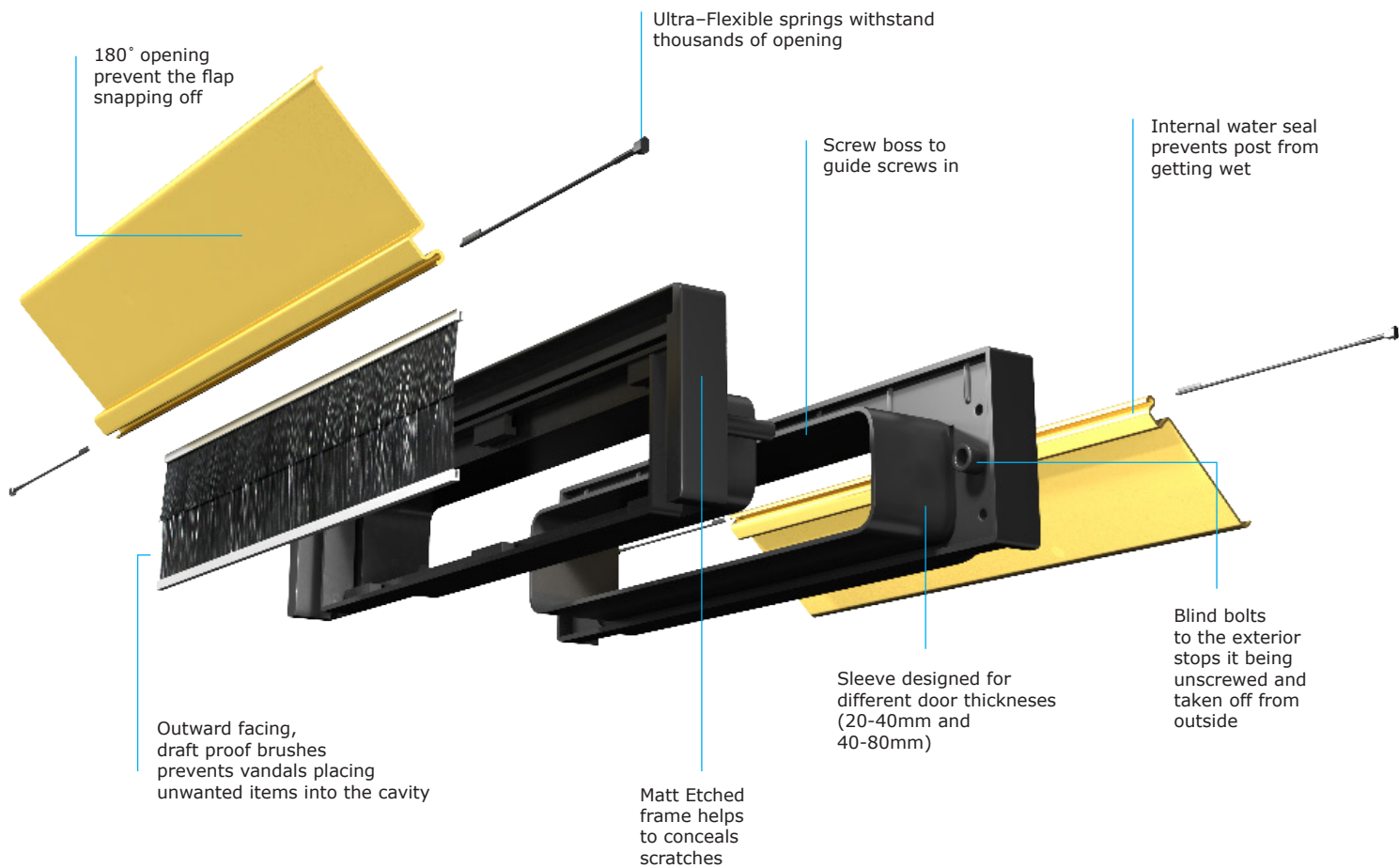


ALL STAINLESS STEEL 12" LETTERPLATE



Finish	Frame Colour	Material Construction	Coating Guarantee	Standard	Heavy Duty
PVD Gold	Mirror Polished	Stainless Steel	LIFETIME	FMSS1248PVDG-NANOCOAST	FMSS1248PVDG-HD-NANOCOAST
Mirror Polished	PVD Gold	Stainless Steel	LIFETIME	FMSS1248MPSS-NANOCOAST	FMSS1248MPSS-HD-NANOCOAST
Satin Stainless	Satin Stainless	Stainless Steel	LIFETIME	FMSS1248SSS-NANOCOAST	FMSS1248SSS-HD-NANOCOAST

FRAMEMASTER 12" LETTERPLATE



ANTI SNAP FLAP



ANTI VANDAL



ANTI SCRATCH



ANTI BURGLAR



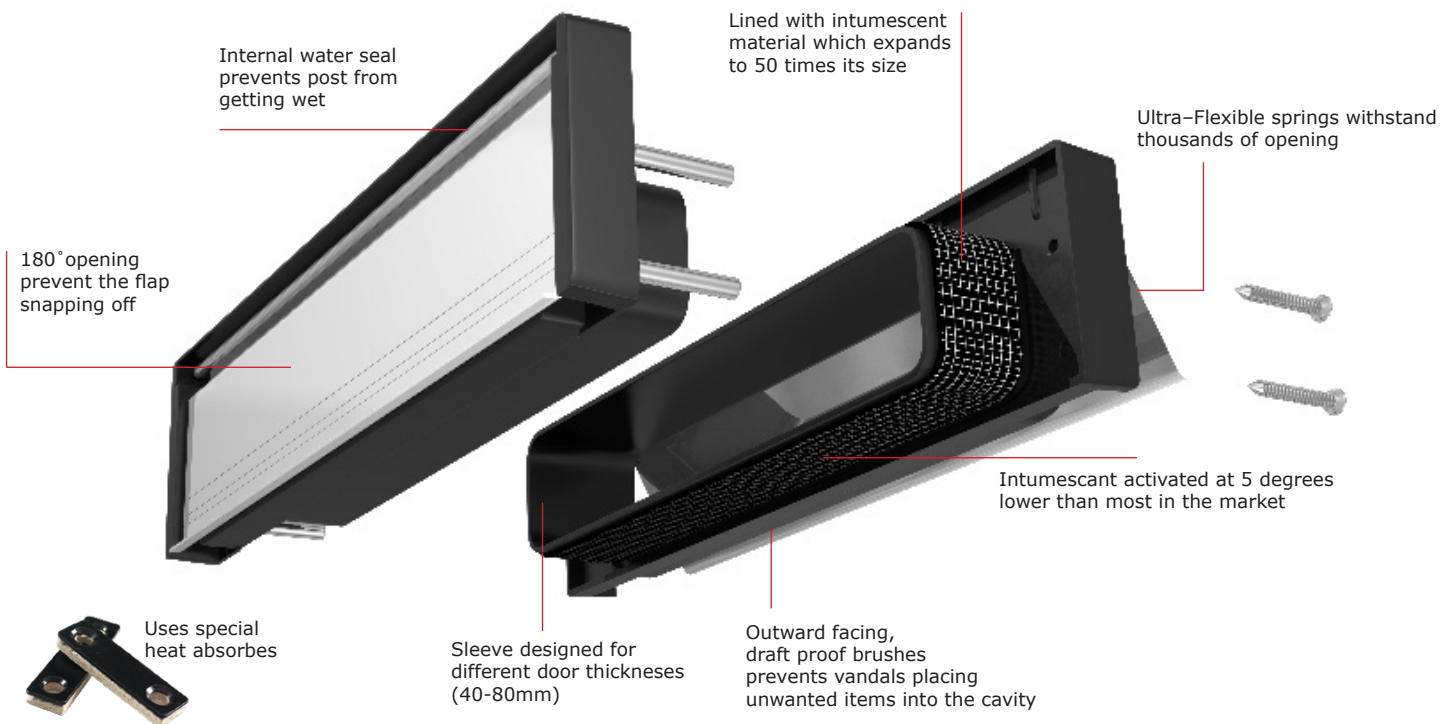
250 mm



Finish	Plastic Frame Colour	Flap Material Construction	Coating Guarantee	20-40mm	40-80mm
Mirror Polished	Black	Stainless Steel	LIFETIME	FMB1224MPSS-NANOCOAST	FMB1248PVDG-NANOCOAST
PVD Gold	Black	Stainless Steel	LIFETIME	FMB1224PVDG-NANOCOAST	FMB1248MPSS-NANOCOAST
Satin Stainless	Black	Stainless Steel	LIFETIME	FMB1224SSS-NANOCOAST	FMB1248SSS-NANOCOAST

FIRERATED 12" LETTERPLATE

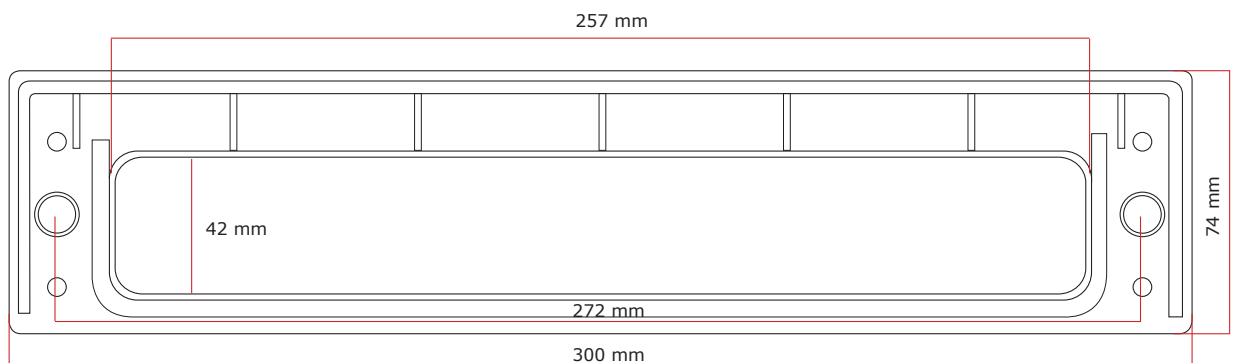
12" FRAMEMASTER LETTERPLATE



Finish	Plastic Frame Colour	Flap Material Construction	Coating Guarantee	40-80mm
Mirror Polished	Black	Stainless Steel	LIFETIME	FMB1248PVDG-FR -NANOCOAST
PVD Gold	Black	Stainless Steel	LIFETIME	FMB1248MPSS-FR -NANOCOAST
Satin Stainless	Black	Stainless Steel	LIFETIME	FMB1248SSS-FR -NANOCOAST

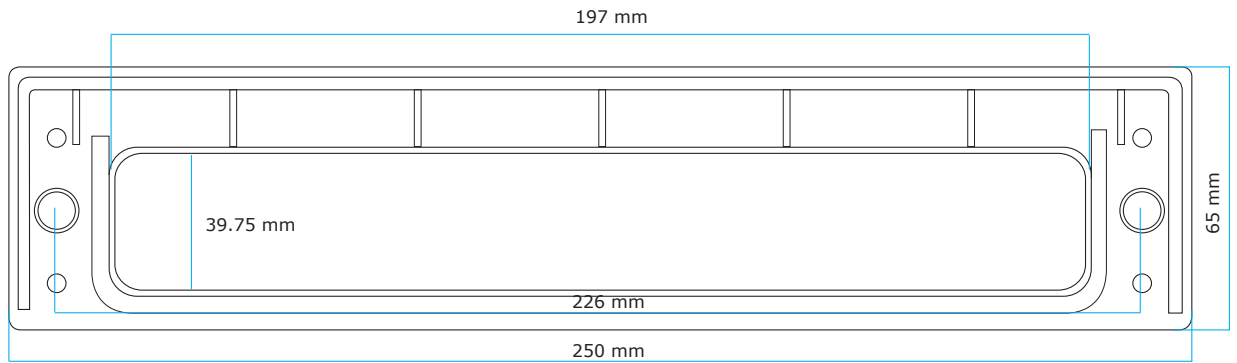


12" ALL STAINLESS STEEL LETTERPLATE



Finish	Frame Colour	Material Construction	Coating Guarantee	Standard	Heavy Duty
PVD Gold	Mirror Polished	Stainless Steel	LIFETIME	FMSS1248PVDG-FR-NANOCOAST	FMSS1248PVDG-CERTIFIRE-NANOCOAST
Mirror Polished	PVD Gold	Stainless Steel	LIFETIME	FMSS1248MPSS-FR-NANOCOAST	FMSS1248MPSS-CERTIFIRE-NANOCOAST
Satin Stainless	Satin Stainless	Stainless Steel	LIFETIME	FMSS1248SSS-FR-NANOCOAST	FMSS1248SSS-CERTIFIRE-NANOCOAST

PETITEMASTER 10" LETTERPLATE



Finish	Plastic Frame Colour	Flap Material Construction	Coating Guarantee	20-40mm	40-80mm
PVD Gold	Black	Stainless Steel	LIFETIME	PMB1224PVDG-NANOCOAST	PMB1248PVDG-NANOCOAST
Mirror Polished	Black	Stainless Steel	LIFETIME	PMB1224MPSS-NANOCOAST	PMB1248MPSS-NANOCOAST

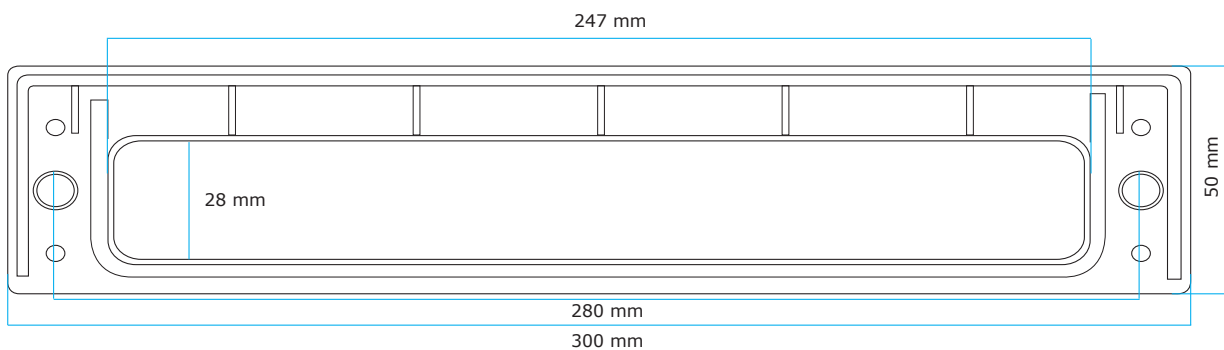


12" SLIMLINE LETTERPLATE



17 mm
Postal
Height

Gap wide enough to fit thick letters and brochures through



Finish	Plastic Frame Colour	Flap Material Construction	Coating Guarantee	40-80mm
Mirror Polished	Black	Stainless Steel	LIFETIME	SLB1248MPSS -NANOCOAST
PVD Gold	Black	Stainless Steel	LIFETIME	SLB1248PVDG -NANOCOAST

iPLATE 12" LETTERPLATE

Soft, Flexible Brushes

– The brushes are made from plastic, and are moulded in to remove the lost brush issues on inferior products.

Totally Frameless & Slim Design – There is no frame on the letterplate, making it look very modern. The thickness of the letterplate is also the slimmest back to front dimension in the industry.

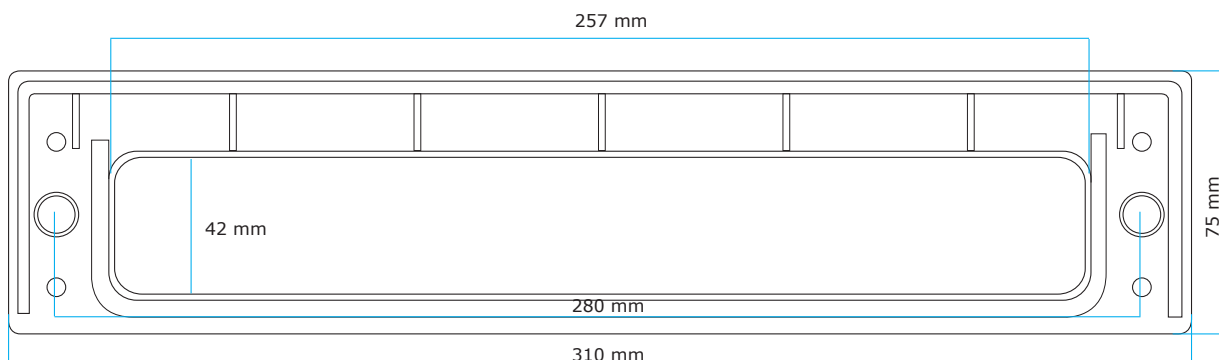
Variable Sizes – Initially suitable for 40-80mm door profiles, the letterplate has sacrificial cut lines on for 24mm and 28mm uPVC door panels.

Gravity Close Mechanism – This unique Patent Pending design stops the flap slamming down, preventing fingers being caught.

Unique Un-Sprung Hinge – As the letterplate uses no springs, and uses gravity to close the letterplate, it eliminates the 'broken spring' syndrome.

Click to Close Feature – This Patent Pending design uses magnets to keep the letterplate closed and secure.

i-Plate®



Finish	Plastic Frame Colour	Flap Material Construction	Coating Guarantee	Product Code
Mirror Polished	Black	Stainless Steel	LIFETIME	IPLATEMPSS-NANOCOAST
PVD Gold	Black	Stainless Steel	LIFETIME	IPLATEPVDG-NANOCOAST
Satin Stainless	Black	Stainless Steel	LIFETIME	IPLATESSS-NANOCOAST

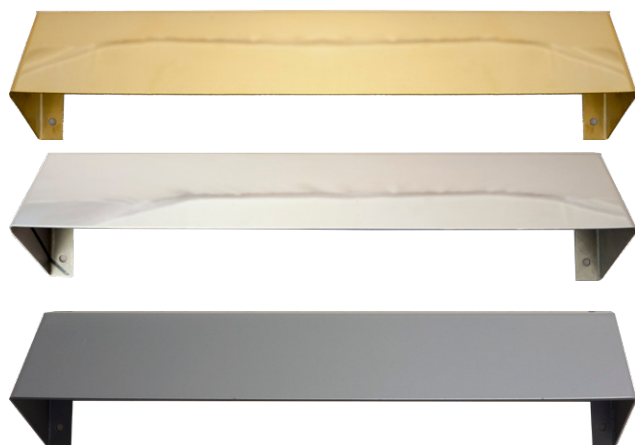


LETTERPLATE SHROUDS

Hidden Fix Letterplate Shrouds

Key Fishing / Letterplate Fishing is a technique burglars use to get hold of keys, purses, handbags and more without even having to enter a property! They simply push open a letterbox flaps and use a long hooked rod, similar to a fishing rod, to 'fish' for keys and handbags. Meaning they can then use the keys to just walk into a property and help themselves to anything they want before driving off in a car!

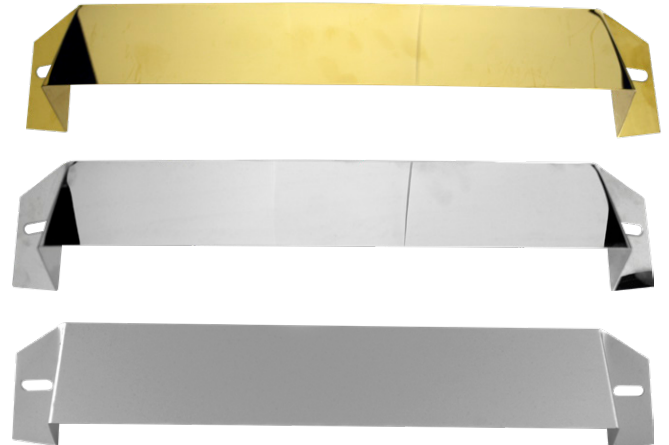
Hidden fix letterplate shrouds have been developed to prevent this from happening. This simple but effective device is 14.5" long and stops the inner flap opening more than 40 degrees and so stops unwanted hands being able to manoeuvre a rod inside.



Screw Fix Letterplate Shrouds

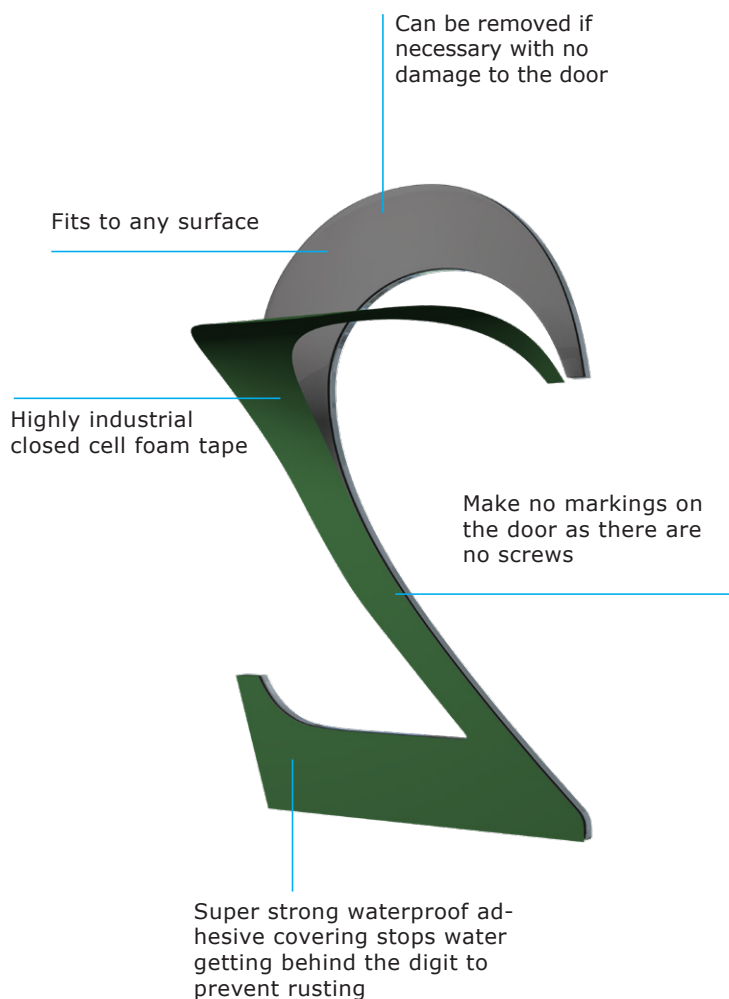
The UAP screw fix letterplate restrictor Shroud will stop hands getting through your letterbox and either hooking your keys, or opening your lock. This simple but effective device is 14.5" long and stops the inner flap opening more than 40 degrees and so stops unwanted hands being able to manoeuvre a rod inside.

The identity card slot have been salt spray tested to ASTM B117 for 2,000 hours, and comes with an industry first LIFETIME coating guarantee, as the products will not pit, rust or corrode no matter what environments you put them in!



Finish	Material Construction	Coating Guarantee	Hidden Fix	Screw Fix
PVD Gold	Stainless Steel	LIFETIME	SHHFPVDG-NANOCOAST	SHPVDG-NANOCOAST
Mirror Polished	Stainless Steel	LIFETIME	SHHFMPS-S-NANOCOAST	SHMPSS-NANOCOAST
Satin Stainless	Stainless Steel	LIFETIME	SHHFSSS-NANOCOAST	SHSSS-NANOCOAST

3" HIDDEN FIX SELF ADHESIVE NUMERALS



0123456789

0123456789

0123456789

Finish	Material Construction	Coating Guarantee	0-9 Numbers	A-C Letters
PVD Gold	Stainless Steel	LIFETIME	0-9TRPVDGSA-NANOCOAST	A-CTRPVDGSA-NANOCOAST
Mirror Polished	Stainless Steel	LIFETIME	0-9TRMPSSSA-NANOCOAST	A-CTRMPSSSA-NANOCOAST
Satin Stainless	Stainless Steel	LIFETIME	0-9TRSSSSA-NANOCOAST	A-CTRSSSSA-NANOCOAST



3" SCREW FIX NUMERALS



0123456789
0123456789

Finish	Material Construction	Coating Guarantee	0-9 Numbers	A-C Letters	D-H Letters
PVD Gold	Stainless Steel	LIFETIME	0-9TRPVDG-NANOCOAST	A-CTRPVDG-NANOCOAST	D-HTRPVDG-NANOCOAST
Mirror Polished	Stainless Steel	LIFETIME	0-9TRMPSS-NANOCOAST	A-CTRMPSS-NANOCOAST	D-HTRMPSS-NANOCOAST

THIN NUMERALS

0123456789 ABCD
0123456789 ABCD
0123456789 ABCD



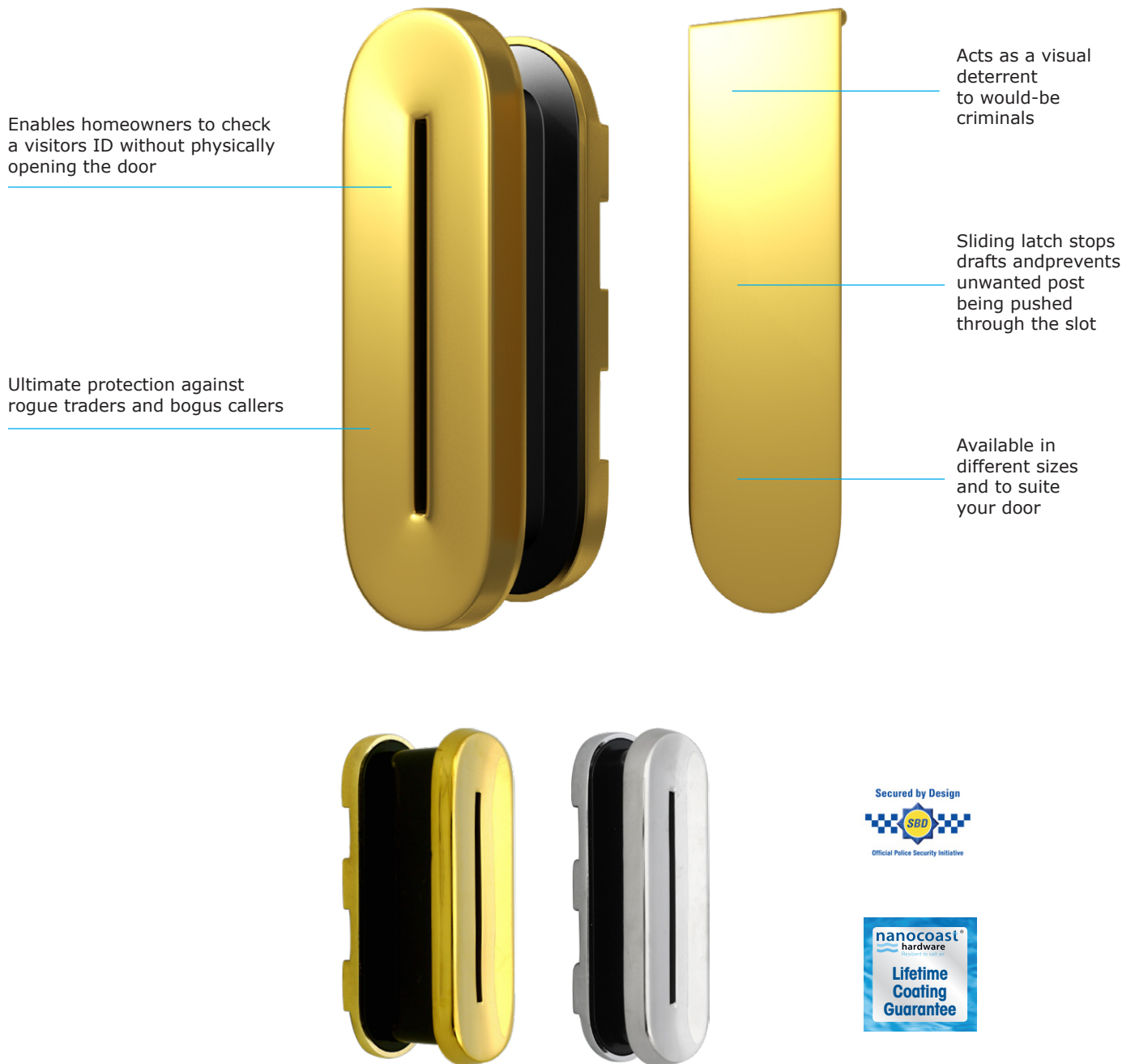
Finish	Material Construction	Coating Guarantee	0-9 Numbers	A-D Letters
PVD Gold	Stainless Steel	LIFETIME	0-9PVDG-NANOCOAST	A-DPVDG-NANOCOAST
Mirror Polished	Stainless Steel	LIFETIME	0-9MPSS-NANOCOAST	A-DMPSS-NANOCOAST
Satin Stainless	Stainless Steel	LIFETIME	0-9SSS-NANOCOAST	A-DSSS-NANOCOAST

IDENTITY CARD SLOTS

The ID Card Entry Slot is the ultimate security accessory for protection against rogue traders and bogus callers. It enables the homeowner to check the ID of a caller without having to open the door; they simply lift up the sliding latch on the inside to allow the caller to slip the card through.

The ID Card Entry Slot allows the occupier to receive the ID Card easily without the awkward fumbling that occurs when trying to receive it through the letterbox. It also enables the occupier to thoroughly check the ID without the pressure of the caller standing in the doorway.

This ID Slot also acts as a visual deterrent to would-be criminals; it shows them that the homeowner is aware of and prepared for bogus callers.

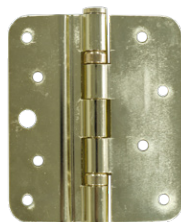
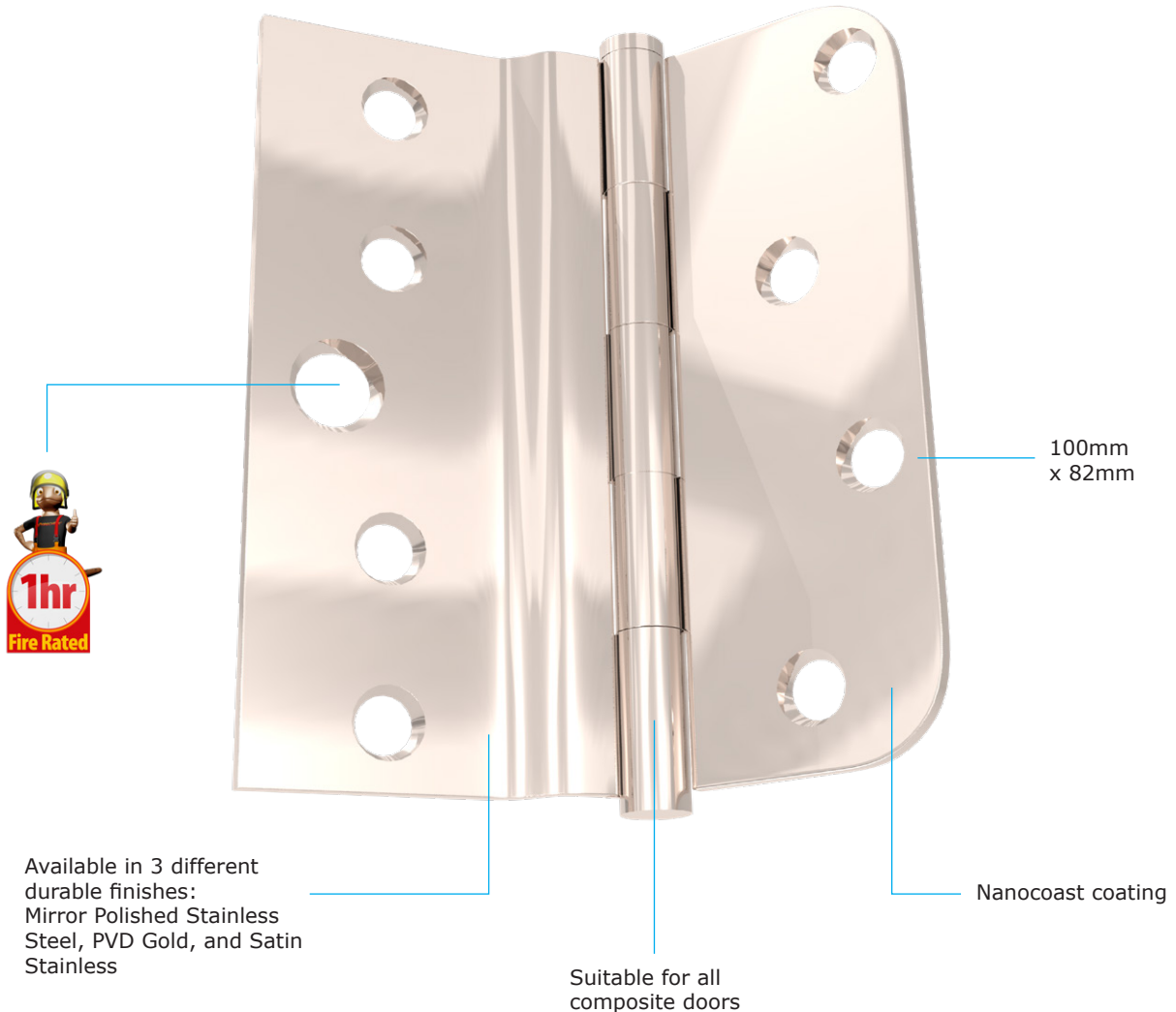


Finish	Material Construction	Coating Guarantee	20-40mm	40-80mm
PVD Gold	Stainless Steel	LIFETIME	ICE2040PVDG-NANOCOAST	ICE4080PVDG-NANOCOAST
Mirror Polished	Stainless Steel	LIFETIME	ICE2040MPSS-NANOCOAST	ICE4080MPSS-NANOCOAST

DOOR HINGES

These fantastic Composite Door Hinges are 44 mm and are suitable for all composite doors. They are also suitable for the Nan Ya and Capstone composite doors as well

as the LB Plastics frames thus making them very universal especially with the most common door types fit in homes throughout the United Kingdom.



Finish	Product Code
Mirror Polished	CDHMPSS-NANOCOAST
PVD Gold	CDHPVDG-NANOCOAST

It was requested that White Technology and Engineering Ltd carry out an evaluation of UAP Composite Door Hinge for LB Frame to EN 1935:2002 to a grading level of:

Category of use	Durability	Test Door Mass	Use on Fire/ Smoke Doors	Safety	Corrosion Resistance	Security	Hinge Grade
2	7	2	0	1	3	0	7

All of the products in our nanocoast range are made from either 304 grade or 316 grade stainless steel. The higher the nickel content in the stainless steel, the better the corrosion resistance, with 304 grade containing 8% nickel and 316 grade containing 10% nickel. This therefore makes it the perfect material to resist corrosion and rust - which can often affect other materials such as brass and zamak, especially at the coast.

Rusting and pitting can stunt the durability of door furniture leaving it tarnished and discoloured. What's more rusting can affect the operational performance of the product as metal fittings become stiff and stop working when they are rusty - leaving you with rigid door handles and inflexible letter plate flaps.

But by using science and innovation we have managed to create a range which can endure both water and salt - increasing the longevity of the product. The stainless steel finish also looks flawless on any door.

Where Nanocoast is needed?

Nanocoast products can be used anywhere, but have been specially designed to withstand harsher environments, such as those by the coast or industrially polluted areas. Specifically areas within a 25 mile radius of the coast or 5 miles of highly populated industrial areas. Properties which are close to the coast have found their door hardware tends to rust and pit much quicker due to the high sea salt concentrated rainfall, so a product which can withstand these kinds of elements will last much longer.

The salt spray test

All Nanocoast products are salt spray tested to ASTM B117 standards for 2,000 hours - longer than any other products, to ensure corrosion resistance quality.

The salt spray test is a standardised and popular corrosion test method, which sees a product being exposed to an extremely corrosive environment designed to accelerate rusting of the object.

It's a breeze for our revolutionary Nanocoast products to stay rust free from salt air. Come rain or shine, this pioneering door hardware will show no sign of pit or corrosion.



UAP Limited
Unit 1 Albert Close Trading Est
Whitefield
Manchester
M45 8EH
England, UK

www.uapcorporate.com

sales@uapcorporate.com

Telephone - 0161 796 7268
Fax - 0161 796 7410