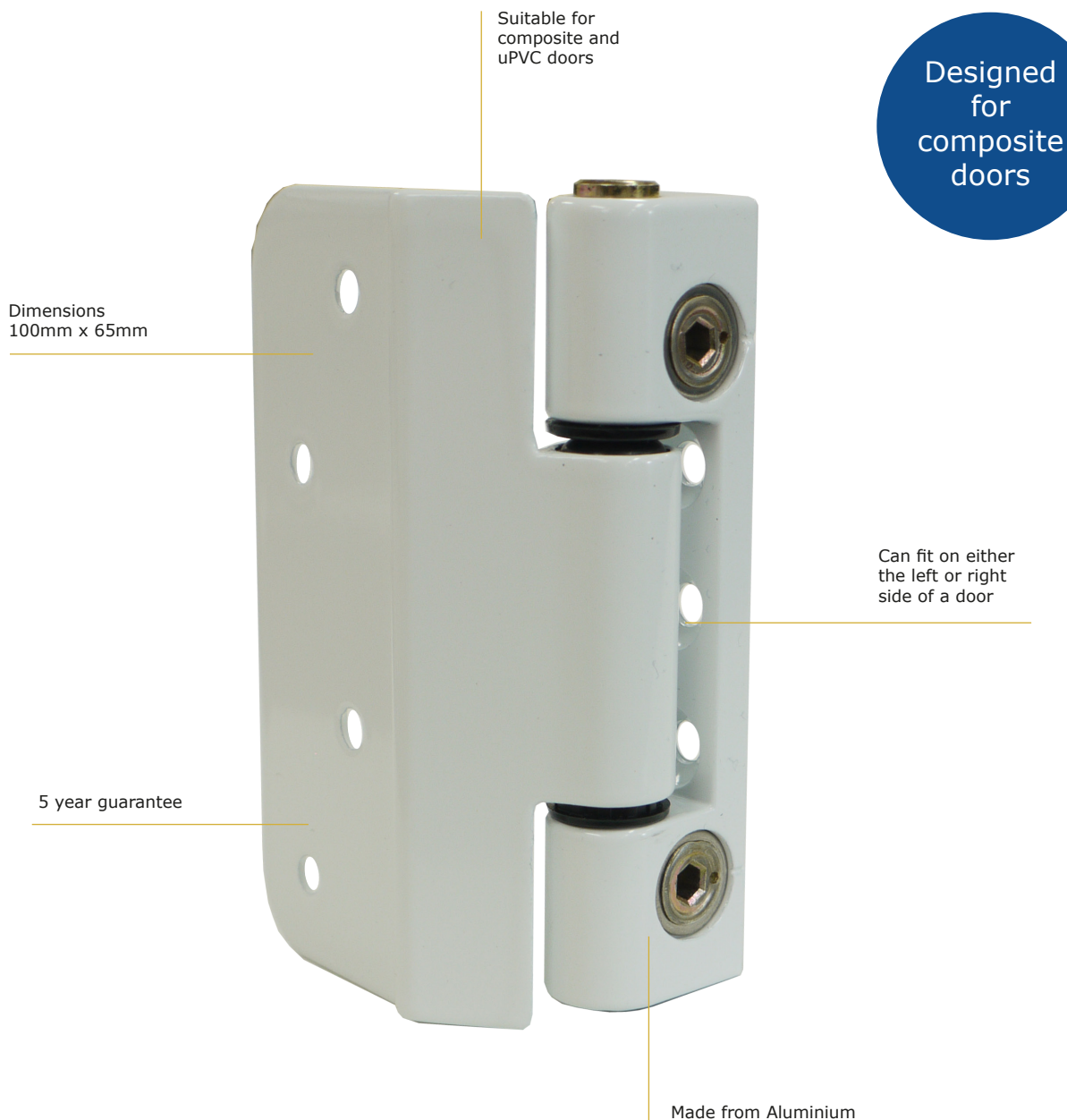


3D ADJUSTABLE COMPOSITE DOOR HINGES

Though many consider the hinges to be simply what holds the doors in place they actually play a major role in door security. This special door hardware goes far beyond the obvious and its durability and overall strength is essential to ensuring that intruders stay out. With that said, many customers will turn to you in hopes to completely refit their new door with high quality door hardware and they know that the professional with the most experience and knowledge for this is a professional locksmith.



Features Include:

- Suitable for composite and uPVC doors
- Dimensions 100mm x 65mm
- Can fit on either the left or right side of a door
- Made from Aluminium
- 5 year guarantee

3D DOOR HINGE

Finishes	Product Code
White	CDH-ADJUSTABLE-WHITE

Maintenance

We recomend a light oiling every year with an acid free oil plus a general clean using a damp cloth twice every year.

Fitting

Angle hinges so the shoulders are the same height as the door face and drill pilot holes. Ensure colour suits hinges and screw to fix (minimum torque 31kg/cm)

Use in Fire Doors

The Adjustable Hinge has been succesfully tested to FD30 as part of a door assembly. However, it is not CE Marked and customers must ensure it complies with any necessary CE Marking requirements.

It was requested that White Technology and Engineering Ltd carry out an evaluation of UAP Composite Door Hinge for LB Frame to EN 1935:2002 to a grading level of:

Category of use	Durability	Test Door Mass	Use on Fire/ Smoke Doors	Safety	Corrosion Resistance	Security	Hinge Grade
2	7	2	0	1	3	0	7

