

LETTERPLATE SLEEVE

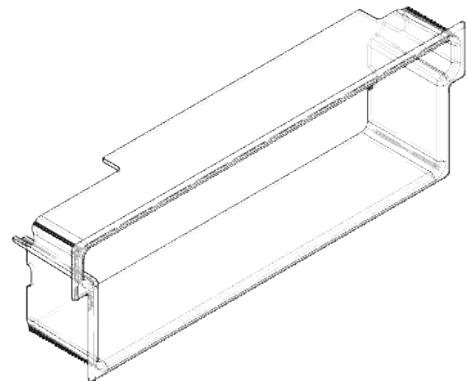
The traditional black iron letterplate sleeve from UAP has been designed to seamlessly complement the black iron letter plate range, in order to give a perfect traditional finish to cottages and period properties, as well as large wooden doors and rustic interiors.

Made from plastic, the black iron letterplate sleeve is designed to line the raw edges of the mail slot door cut out to give the letterplate a tidy look. This mail slot sleeve is constructed from durable, highly resistant and lightweight material.

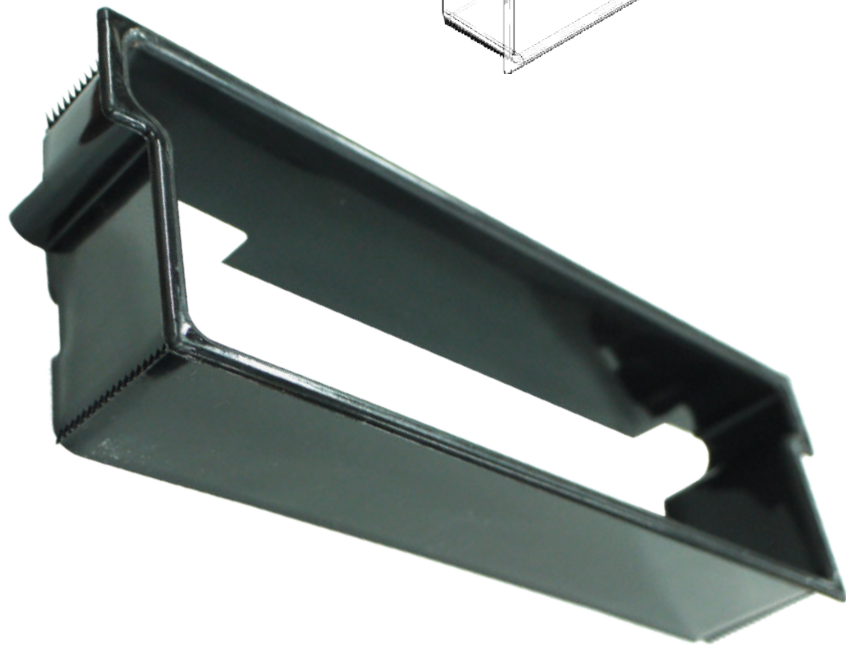
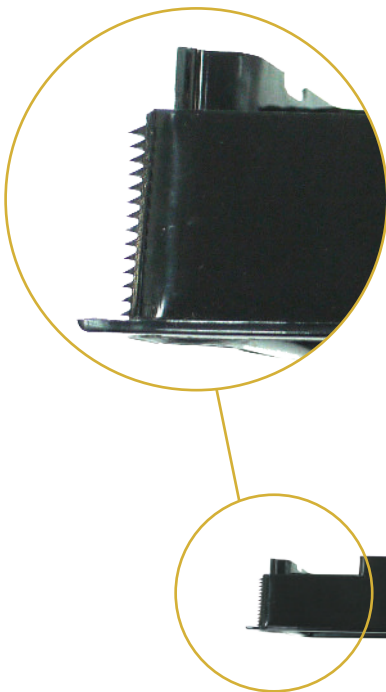
Made with solid cast iron, the UAP black iron door hardware range is available in a number of different products including a black iron front door handle, door chain, a selection of classically designed letter plates, eye catching door numerals, and traditional door knockers.

Features Include:

- Designed for composite and wooden doors
- Made of plastic for maximum corrosion protection
- Keeps mail from falling between door panels
- Creates a neat and tidy finish to the door
- Very easy to install
- Ideal for cottages and period properties



Push in grip



LETTERPLATE SLEEVE

