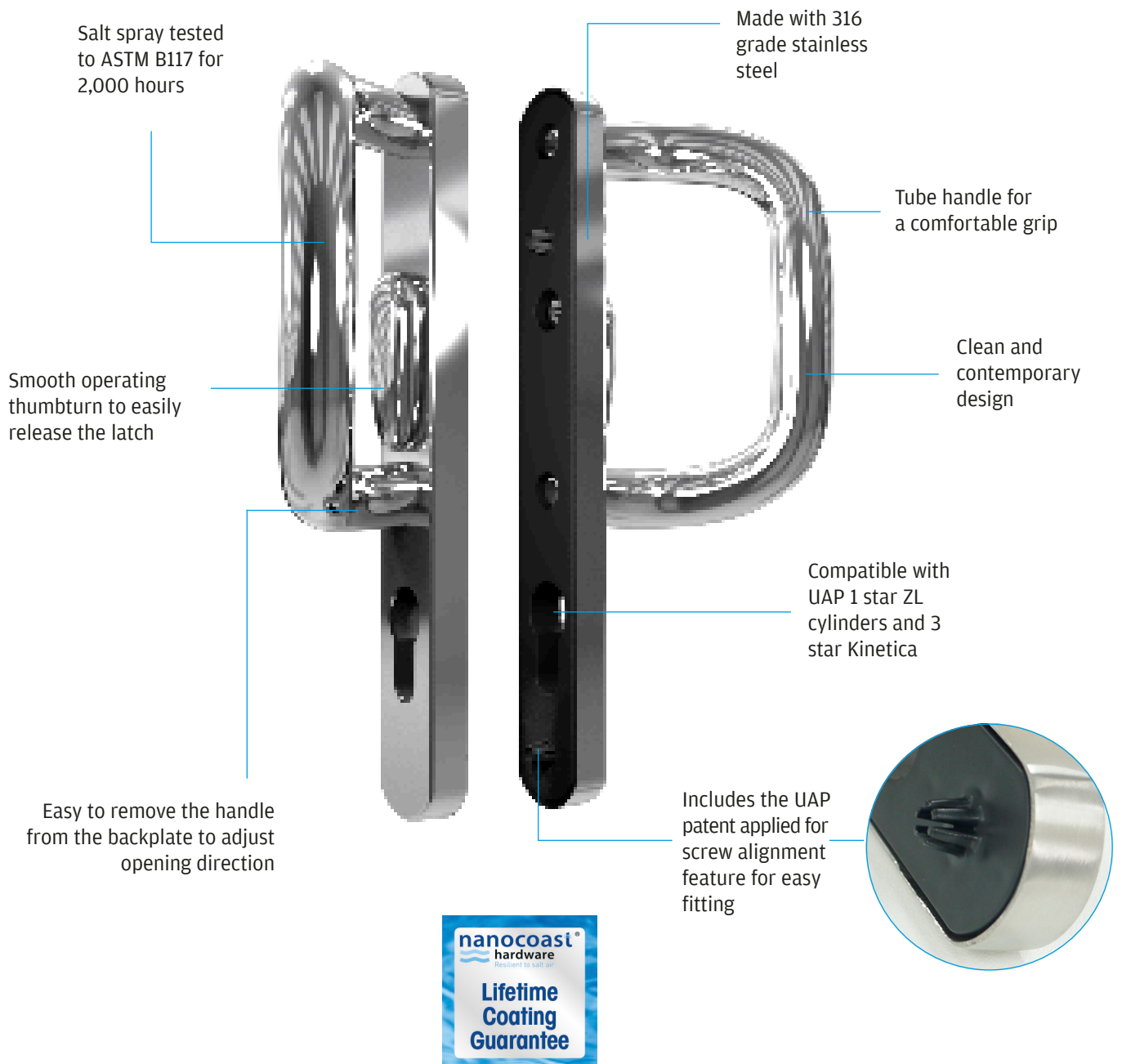


PATIO DOOR HANDLE

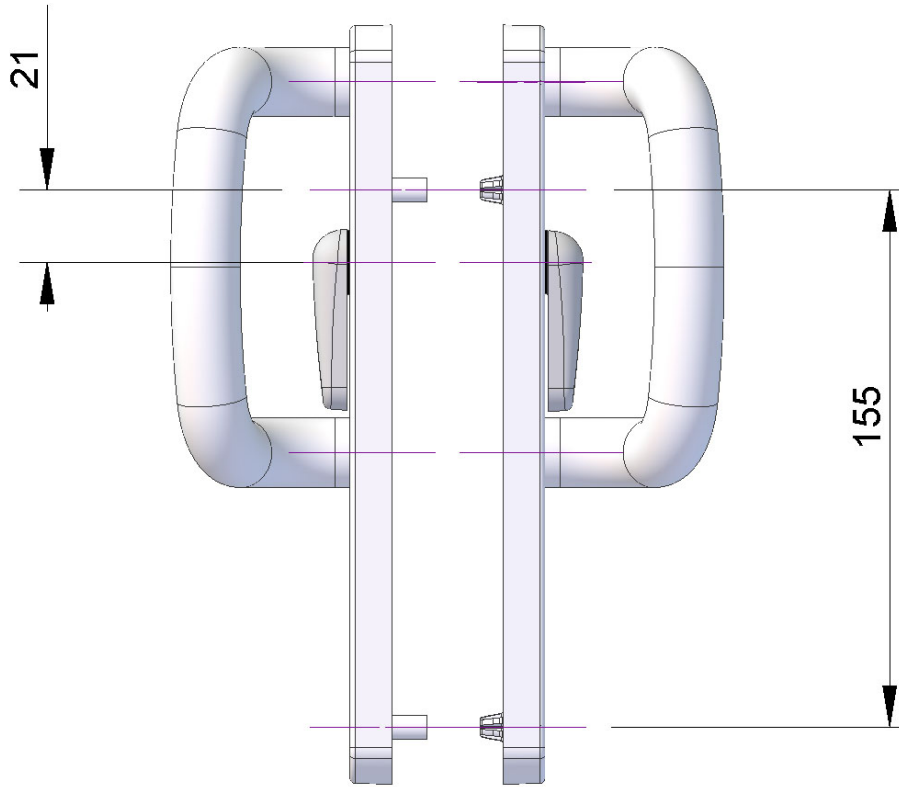
The UAP Nanocoast Patio Door Handle has a 219mm backplate and has been made with ease of fitting, smooth operation and high quality in mind.

It is contemporary in appearance with plenty of space to grip the handle for a more comfortable opening operation. We have made fitting the handle simple with our patented screw alignment feature. This allows you to easily line the holes in the handle up with the holes in your door, and the feature will hold the screws in perfect alignment while you secure them to the door. The handle also comes ready fitted to the backplate, but if you need to adjust the direction of the handle it can easily be removed and re fitted.



PATIO DOOR HANDLE

The handle is made with 316 grade stainless steel; the highest grade of stainless on the market, offering the best protection against rust and corrosion. As it is part of the Nanocoast range the handle also comes with a lifetime coating guarantee.



Easy to remove the handle from the backplate to adjust opening direction

Each outer handle comes with a LIFETIME coating guarantee!

Salt spray tested to ASTM B117 for 2,000 hours

High quality designed handle



Mirror Polished



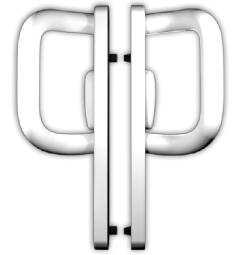
Satin Stainless



PVD Gold



Black



White

Finishes	Backplate 219mm	Material	Coating Guarantee
Mirror Polished	PATIO-MPSS-NANOCOAST	Stainless Steel	Lifetime
Satin Stainless	PATIO-SSS-NANOCOAST	Stainless Steel	Lifetime
PVD Gold	PATIO-PVDG-NANOCOAST	Stainless Steel	Lifetime
Black (Powder coated)	PATIO-BLACK-NANOCOAST	Stainless Steel	Lifetime
White (Powder coated)	PATIO-WHITE-NANOCOAST	Stainless Steel	Lifetime